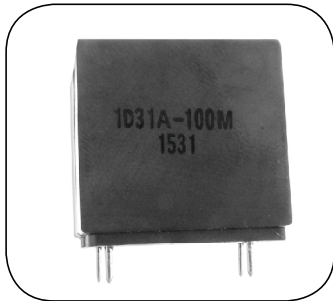


1D31A Series Class D Inductor



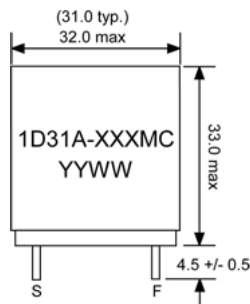
Features

- Small Footprint
- Shielded Design for low EMI
- Ferrite Material Designed for Audio Applications

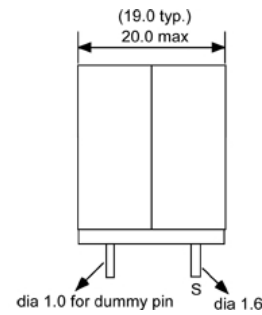
Applications

- Class D Audio Amplifiers

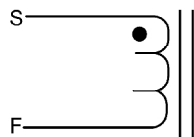
Front View



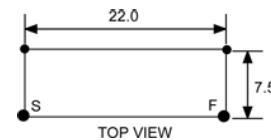
Side View



Schematic



Footprint



units: mm

Electrical Specifications

Part No.	L_s^1 ($\mu\text{H} \pm 20\%$)	DCR (mOhms Max.)	I_{sat}^5 (A _{dc})	I_{DC}^4 (A _{dc})
1D31A-100MC	10	6.3	50.0 min	12.5
1D31A-120MC	12	6.3	50.0 min	12.5
1D31A-150MC	15	6.9	42.0	12.0
1D31A-180MC	18	6.3	32.0	12.5
1D31A-220MC	22	6.9	31.0	12.0

Notes:

1. Tested at 100kHz, 1Vrms series.
2. Electrical specifications at 25°C.
3. Operating range: -40°C to +130°C. This is a combination of ambient plus temperature rise.
4. DC current through winding to cause a 40°C temperature rise at 25°C ambient.
5. DC current through the winding to cause a 25% drop in inductance
6. All products are RoHS-compliant.
7. Meets UL 94V-0



Specifications subject to change without notice.

Mouser Electronics

Authorized Distributor

Click to View Pricing, Inventory, Delivery & Lifecycle Information:

ICE Components:

[1D31A-180MC](#) [1D31A-100MC](#) [1D31A-120MC](#) [1D31A-220MC](#) [1D31A-150MC](#)