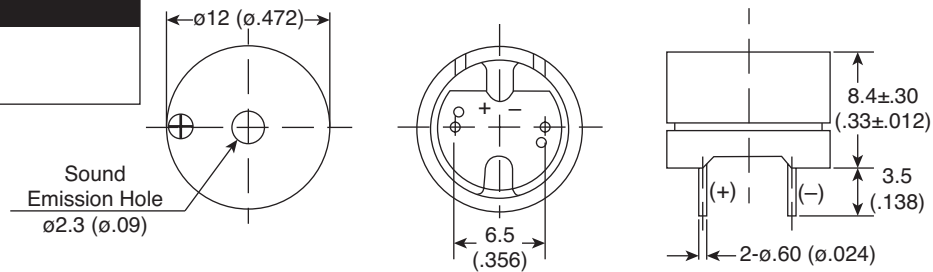


Part Number:

254-EMB140-RO



Frequency Response Curve

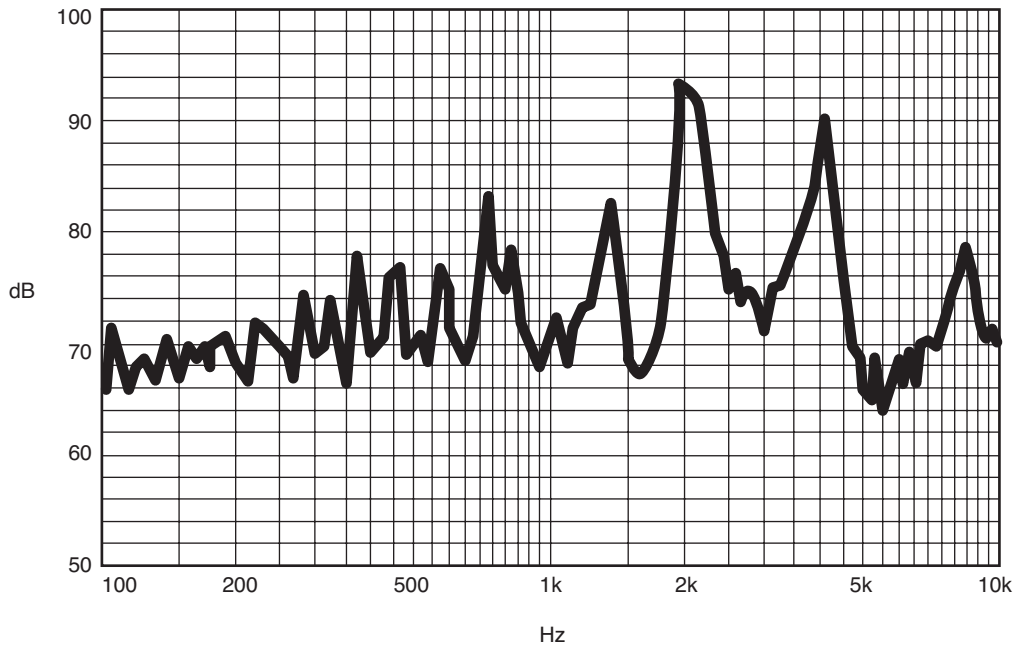
A: Frequency Response, Magn dB re 20.00 μ PA

X: 2.0535 kHz

Y: 93.39dB

ZA: Live Curve

SSR T. RMS



Magnetic Buzzer (External Drive)

KT-400549

Soldering Specifications:

- Hand Soldering: 360°±5°C/2 sec.
- Recommend using constant searing-iron
- Cautions: Wave soldering and wash not allowed

Electrical Specifications:

- Rated Voltage: 3.5Vo-p
- Operating Voltage: 2.5 ~ 6.0Vo-p
- Mean Current: 35mA (Max)
- Peak Current: 105mA (Max)
- Direct Current Resistance: 42±6.3 Ω
- Sound Output: 85dBA (Min)
- Rated Frequency: 2048Hz

Mechanical Specifications:

- Operating Temperature: -20°C ~ +60°C
- Storage Temperature: -40°C ~ +80°C

Note: RoHS Compliant

Mouser Electronics

Authorized Distributor

Click to View Pricing, Inventory, Delivery & Lifecycle Information:

[Kobitone:](#)

[254-EMB140-RO](#)