

REVISIONS					
REV	ECO	DESCRIPTION	DATE	BY	CHECKED
-	-	NEW DRAWING	4/19/04	DDK	DRW
A	D6565	SEE ECO	6/7/04	DDK	DRW
B	D6865	SEE ECO	3/24/05	DDK	DRW
C	D7444	SEE ECO	5/18/06	DDK	DRW
D	28891	SEE ECN	7/21/2008	SEW	
E	100192	SEE ECO	2/27/2014	DRW	MCP

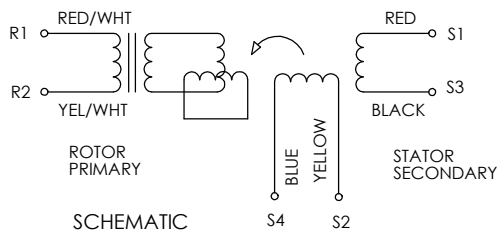
- NOTES:
1. MATCHED SET - DO NOT ISSUE SEPARATELY.
  2. ROTOR AND STATOR TO BE ALIGNED WITH DATUM 'B' ±.015
  3. CUSTOMER MUST MAINTAIN SHAFT RUNOUT WITH RESPECT TO DATUM 'A' WITHIN .003 T.I.R.
- ⚠️ LEADS TO BE TWISTED PAIRS COVERED WITH A SINGLE TIN PLATED TUBULAR BRAID AND HEAT SHRINKABLE RNF-150 TUBING.
- ⚠️ NAMEPLATE MUST NOT BE WITHIN MINIMUM DIMENSION SHOWN

ELECTRICAL & MECHANICAL DATA AT 25°C		
VALUES ARE REFERENCE UNLESS OTHERWISE TOLERANCED		
HIPOT TESTING PERFORMED AT 60HZ, 4 SECOND DURATION		
ELEC CYC / MECH CYC	deg/deg	1
EXCITATION FREQUENCY	±1% kHz	7.0
INPUT VOLTAGE	±5% Vrms	4.25
INPUT CURRENT	Max. mArms	55
INPUT POWER	Watts	.15
IMPEDANCE  ZRO	Ohms	91
IMPEDANCE  ZRS	Ohms	86
IMPEDANCE  ZSO	Ohms	468
IMPEDANCE  ZSS	Ohms	445
TRANSFORMATION RATIO	±5%	.47
DC RESISTANCE (R1-R2)	±15% Ohms	39
DC RESISTANCE (S1-S3, S2-S4)	±15% Ohms	54
ERROR	Max. arcminutes	±30
PK-PK ERROR	Max. arcminutes	-
PK-PK VELOCITY RIPPLE ERROR	Max. %	-
PHASE SHIFT, OPEN CIRCUIT	±3 degrees	+4
NULL VOLTAGE	Max. mVrms	30
HIPOT, LEADS TO CASE, 500VAC	Max. mArms	2
HIPOT, INTERPHASE, 250VAC	Max. mArms	2
TEMPERATURE RANGE	°C	-55 TO +155
ROTOR MOMENT OF INERTIA	oz-in-sec <sup>2</sup>	.26
WEIGHT	lbs	3.3

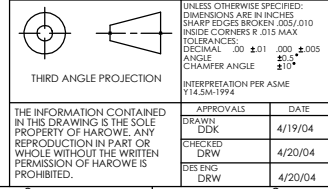
**PHASING EQUATION**

INCREASING ANGLE FOR CCW ROTATION AS VIEWED FROM MOUNTING END

E (S1-S3) = KE (R1-R2) COS Φ  
 E (S2-S4) = -KE (R1-R2) SIN Φ



**SCHEMATIC**



THE INFORMATION CONTAINED IN THIS DRAWING IS THE SOLE PROPERTY OF HAROWE. ANY REPRODUCTION IN PART OR WHOLE WITHOUT THE WRITTEN PERMISSION OF HAROWE IS PROHIBITED.

UNLESS OTHERWISE SPECIFIED: DIMENSIONS ARE IN INCHES SHARP EDGES BROKEN .005/.010 INSIDE CORNERS R.015 MAX TOLERANCES: DECIMAL .00 ±.01 .000 ±.005 ANGLE .001° ±.01° CHAMFER ANGLE .010° ±.01°	
APPROVALS	DATE
DRAWN: DDK	4/19/04
CHECKED: DRW	4/20/04
DESIGN: DRW	4/20/04

**Harowe**

OUTLINE & PERFORMANCE SPECIFICATION

RESOLVER BRUSHLESS

SIZE DWG. NO. **55BRCX-520-J5/30**

SCALE .75:1 SHEET 1 OF 2 CODE IDENT: 58655

# Mouser Electronics

Authorized Distributor

Click to View Pricing, Inventory, Delivery & Lifecycle Information:

[API Delevan:](#)

[55BRCX-520-J5/30](#)