

# BR2330

# LITHIUM POLY-CARBONMONOFLUORIDE



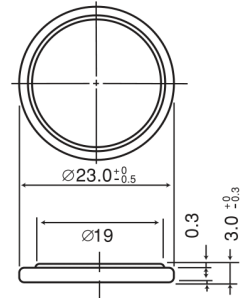
### Features & Benefits

- High voltage of 3 volts
- Extremely small self-discharge for long service and shelf life
- Compact and lightweight with extremely high energy density per unit weight
- Strong load pulse characteristics

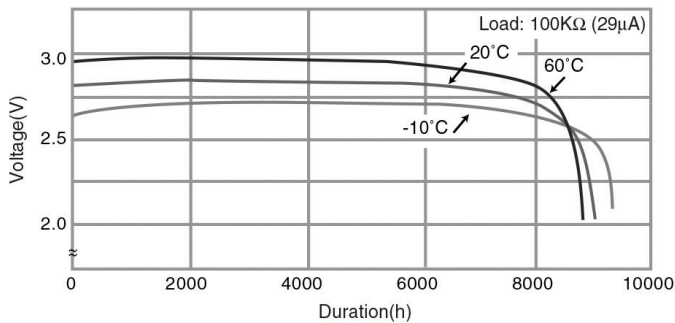
### Specifications

Nominal Capacity:	165 mAh
Nominal Voltage:	3V
Weight:	Approximately 3.2g
Operating Temperature:	-30°C - +80°C

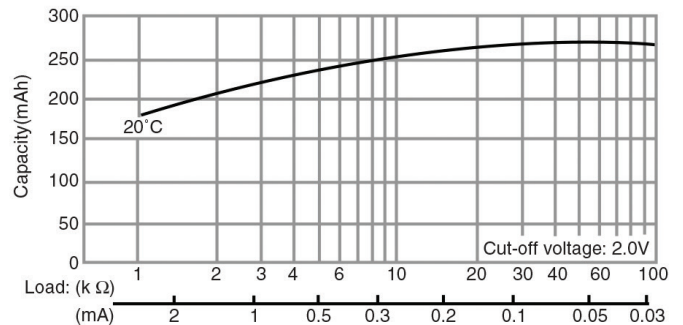
### Dimensions



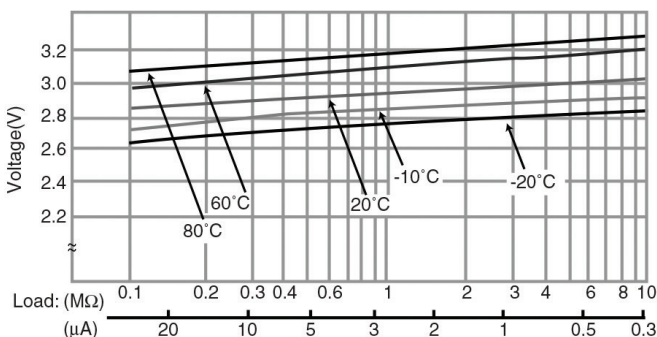
### Temperature Characteristics



### Capacity vs. Load Resistance



### Operating Voltage vs. Load Resistance (voltage at 50% discharge depth)



### ⚠ WARNING

Serious harm in as little as 2-hours if swallowed. **KEEP AWAY FROM CHILDREN.** Seek immediate medical help if swallowed. Have the doctor call the poison center at 1-(800) 222 1222.

Product manufacturers should design their products to meet the safety requirements of Annex I of UL60065 or equivalent standards.

For more information on how Panasonic can assist you with your battery power solution needs call **877-726-2228**, visit [www.na.industrial.panasonic.com/products/batteries](http://www.na.industrial.panasonic.com/products/batteries) or e-mail [oembatteries@us.panasonic.com](mailto:oembatteries@us.panasonic.com).

The data in this document is for descriptive purposes only and is not intended to make or imply any guarantee or warranty.

# Mouser Electronics

Authorized Distributor

Click to View Pricing, Inventory, Delivery & Lifecycle Information:

[Panasonic:](#)

[BR2330](#) [BR-2330/HEN](#) [BR-2330/GVFN](#) [BR-2330/HFN](#) [BR-2330/VCN](#) [BR-2330/F3N](#) [BR-2330/GUFN](#)