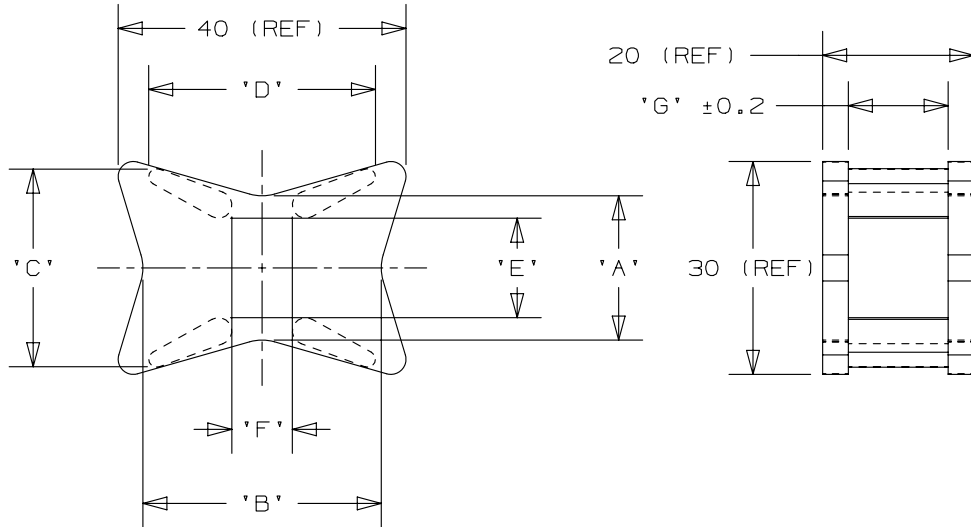


2

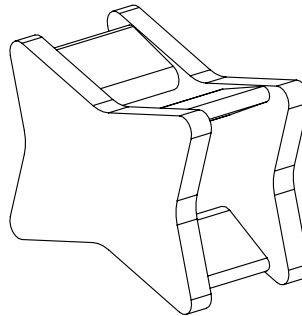
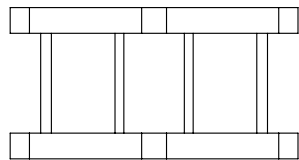
1

THIS COPY IS PROVIDED ON A RESTRICTED BASIS AND IS NOT TO BE USED IN ANY WAY DETRIMENTAL TO THE INTERESTS OF PANDUIT CORP.

PANDUIT PART NO.	DIMENSIONS							WEIGHT grams / 100 pcs
	'A'	'B'	'C'	'D'	'E'	'F'	'G'	
CSEH15A30	18.6	31	26.3	29.7	11.2	8	13.1	833



- NOTES:
- FOR USE WITH PANDUIT CABLE TIE TYPE:  
 M- MINATURE I- INTERMEDIATE  
 S- STANDARD H- HEAVY  
 EH- EXTRA HEAVY
  - SEE [www.panduit.com](http://www.panduit.com) FOR CURRENT PART NUMBER SUFFIX DESIGNATION, PACKAGE SIZE AND PART COLOR.



TITLE				CABLE SPACER			
ITEM REVISION NAME				10B015IV/00			
DATASET FILE NAME				10B015IV_DC/00 - GB1932BV_REV01			
UNLESS OTHERWISE SPECIFIED, DIMENSIONAL TOLERANCES ARE: IN [ mm ]				MATERIAL:			
± 0.5 mm				SEE NOTE 1			
DRAWN BY				DRAWING NUMBER:			
JAD				GB1932BV			
DATE				THIRD ANGLE PROJECTION			
4/28/03				SHT 1 OF 1			
CHK				SCALE			
NONE				SIZE			
A4				A4			

REV	DATE	BY	CHK	APR	DESCRIPTION	ECN
1	3/19/13	BWG	JADE	PBC	DIMENSIONS C, D, E AND G REVISED. REVISED NOTES.	GB1932BV

2

1

# Mouser Electronics

Authorized Distributor

Click to View Pricing, Inventory, Delivery & Lifecycle Information:

[Panduit:](#)

[CSEH15A30-M20](#) [CSEH15A30-C100](#) [CSEH15A30-M100](#) [CSEH15A30-C20](#) [CSEH15A30-C0](#) [CSEH15A30-M0](#)