



Quality Products. Service Excellence.

ABS Plastic Hand Held Enclosures *RH Series*

Battery Door

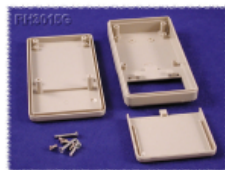
Key Features



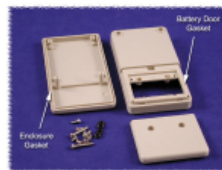
- Electronic hand held enclosures, ideally suited for mounting printed circuit boards.
- Ergonomically designed for a comfortable fit into the user's hand.
- Lap joint construction provides protection against dust accumulation and splashing water.
- Available in two versions - gasketed (IP65 rated) & no gasket.
- Gasketed version includes gasket around top & bottom half and around battery door (factory installed).
- Molded in a general purpose ABS plastic with a light texture (material carries a UL flammability rating of UL94 HB).
- The top half includes a smooth recessed area for membrane, label or silkscreen.
- Assembled with M3 Philips self tapping screws.
- Both top and bottom halves contain P.C. board standoffs molded in (see photos for details).



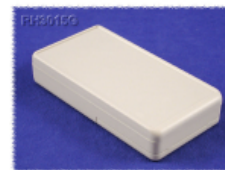
Photos



Non-gasketed version



Gasketed version



Assembled

Belt Clips



- Choice of either black or grey (to match above enclosures)
- Made from tough nylon material
- Includes mounting hardware
- Black - Part Number **CP-001BK**
- Grey - Part Number **CP-001G**.

Black Enclosure	Gray Enclosure	Gaskets	Length	Width	Depth (Assembled)
RH3011BK	RH3015	no	5.12	2.68	0.98

Black Enclosure	Gray Enclosure	Gaskets	Length	Width	Depth (Assembled)
RH3001BK	RH3005	yes	5.12	2.68	0.98
RH3051BK	RH3055	no	6.30	3.30	1.20
RH3045BK	RH3045	yes	6.30	3.30	1.20

Data subject to change without notice

© 2019. Hammond Manufacturing Ltd. All rights reserved.

Mouser Electronics

Authorized Distributor

Click to View Pricing, Inventory, Delivery & Lifecycle Information:

[Hammond:](#)

[RH3001BK](#) [RH3015](#) [RH3055](#) [RH3045](#) [RH3005](#) [RH3041BK](#) [RH3051BK](#) [RH3011BK](#) [RH3045BK](#)